

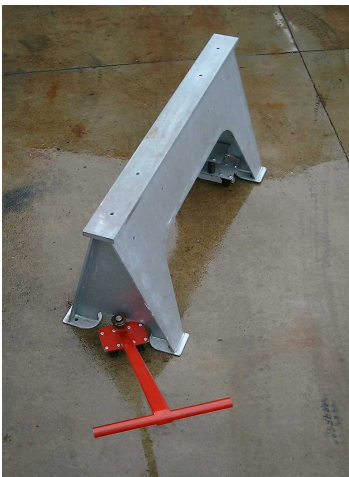
SAFETY FIRST

At Safety Supports Inc. our primary objective is to provide safe supports for any working load. Our products are designed to have safe capacities to support working loads plus a major factor of safety to protect against impact loads and unforeseen variables. Manufacturing is done under CWB certified welding and with strict quality control. Each unit is given professional engineering certification for load capacity, our guaranty of safety.



TRESTLE/DIE STANDS

- ◆ Unique sturdy design and construction.
- ◆ All welded construction – no bolts to loosen.
- ◆ Multiple uses: supporting dies, moulds, machinery, etc.
- ◆ Dual rating – point load & centred solid load.
- ◆ 1/2-13 UNC holes in top surface for attachment.
- ◆ Holes in side plates for tie-down.
- ◆ Easily moved by forklift or crane.
- ◆ Custom designs available to suit your needs.
- ◆ Minimum of two units required for safe support.
- ◆ Tested under calibrated hydraulic press loading.
- ◆ Standard galvanized finish for long life.
- ◆ Wheel attachment for ease of placement.





TRESTLE SPECIFICATIONS

Model	Style	Uniform or Solid Load On 2/3 Length Each Unit	Center Point Load Each Unit	Height	Length	Feet Width	Weight (ea.)
1-24-48	C	2 TON / 1814 kg	1 TON / 907 kg	24 in(610 mm)	48 in (1219 mm)	15.9 in (404mm)	75 lb (34 kg)
1-30-48	C	2 TON / 1814 kg	1 TON / 907 kg	30 in (762 mm)	48 in (1219 mm)	18.6 in (472mm)	93 lb (42 kg)
1-36-48	C	2 TON / 1814 kg	1 TON / 907 kg	36 in (914 mm)	48 in (1219 mm)	21.8 in (472mm)	110 lb (50 kg)
1-42-48	C	2 TON / 1814kg	1 TON / 907kg	42 in (1067mm)	48 in (1219 mm)	25 in (635mm)	130 lb (59kg)
2-30-48	C	4 TON / 3630 kg	2 TON / 1814 kg	30 in (762 mm)	48 in (1219 mm)	18.8 in (478mm)	120 lb (55 kg)
4-24-48	B	8 TON / 7260 kg	4 TON / 3630 kg	24 in (610 mm)	48 in (1219 mm)	18.2 in (462mm)	120 lb (55 kg)
4-30-48	A	8 TON / 7260 kg	4 TON / 3630 kg	30 in (762 mm)	48 in (1219 mm)	18.6 in (472mm)	140 lb (63 kg)
6-24-36	B	12 TON / 10886 kg	6 TON / 5443 kg	24 in (610 mm)	36 in (914 mm)	18.3 in (465mm)	98 lb (45 kg)
6-30-36	A	12 TON / 10886 kg	6 TON / 5443 kg	30 in (762 mm)	36 in (914 mm)	18.6 in (472mm)	115 lb (52 kg)
8-24-48	B	16 TON / 14520 kg	8 TON / 7260 kg	24 in (610 mm)	48 in (1219 mm)	19.5 in (495mm)	183 lb (83 kg)
8-30-48	A	16 TON / 14520 kg	8 TON / 7260 kg	30 in (762 mm)	48 in (1219 mm)	19.1 in (485mm)	210 lb (95 kg)
10-18-36	B	20 TON / 18140 kg	10 TON / 9072 kg	18 in (457 mm)	36 in (914 mm)	15.9 in (404mm)	103 lb (47 kg)
10-24-36	B	20 TON / 18140 kg	10 TON / 9072 kg	24 in (610 mm)	36 in (914 mm)	18.8 in (478mm)	120 lb (55 kg)
10-30-36	A	20 TON / 18140 kg	10 TON / 9072 kg	30 in (762 mm)	36 in (914 mm)	20.3 in (516mm)	145 lb (66 kg)
10-36-36	A	20 TON / 18140 kg	10 TON / 9072 kg	36 in (914 mm)	36 in (914 mm)	23.5 in (597mm)	185 lb (84 kg)
15-24-48	B	30 TON / 27200 kg	15 TON / 13600 kg	24 in (610 mm)	48 in (1219 mm)	18.2 in (462mm)	250 lb (113 kg)
15-30-48	A	30 TON / 27200 kg	15 TON / 13600 kg	30 in (762 mm)	48 in (1219 mm)	19.5 in (495mm)	300 lb (136 kg)
25-30-60	A	50 TON / 45400 kg	25 TON / 22700 kg	30 in (762 mm)	60 in (1524 mm)	22 in (559mm)	519 lb (235 kg)

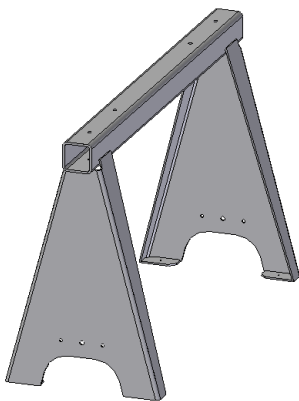


SAFETY FIRST

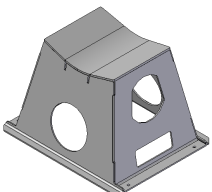


The trestle design created by Safety Supports Inc. has a generous safety factor built in to assure the safest load supporting in the industry. Safe load capacity means that these stands are heavy. A simple design has been developed to make moving and spotting the stands easy. A spring-loaded wheel assembly tucked inside one end of the unit raises the feet clear of the floor when no load is on the unit while the other end is firmly on the floor. When the hand truck shown above is engaged in a ring on the end opposite the spring-loaded wheels and a light downward pressure is applied on the handle, the trestle is as easy to move as a child's wagon. This eliminates the battle with swivel casters that always want to go in a direction away from your destination. One hand truck can be used for several trestles. The unit above is ready to go!

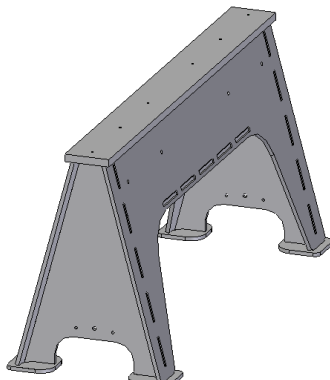
The spring-loaded unit is easily retrofitted to existing trestles manufactured by Safety Supports Inc. The system could also be added to other similar equipment. A quick assessment by the engineering services of Safety Supports Inc. would determine this adaptability.



2 TON TRESTLE



6 TON 12" WHEEL STAND



50 TON TRESTLE
 - 25 TON POINT LOAD



18 TON